

**We are always available for consultation on manufacturing.**  
 We also offer a PR visit with a small and high-speed demonstration unit.  
 Please feel free to inquire.

**MEG**  
 MACHINE ENGINEERING



# MEG Digest Guide



**MACHINE ENGINEERING CORPORATION**



# Assured unit line-up that creates optimum assembly motions



## GRIPPING

### Stable grip chuck with proven performance

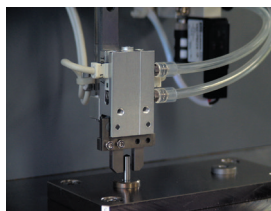
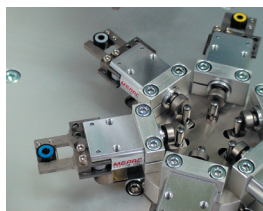
#### Over 40 Years of Proven Performance

We have been developing parallel chucks for more than 40 years. It has earned high praise and a strong track record across various industries for its long service life and high clamping force.

#### MEPAC Parallel Open-Close Chuck MEG Parallel Air Chuck



	<b>Eco-multi</b>	<b>Eco</b>	<b>Three-jaw</b>	<b>Standard</b>	<b>Short</b>	<b>Floating</b>	<b>Almighty</b>	<b>Taste</b>	<b>Infinity</b>	<b>Micro</b>
	Single-action Double-action Mechanical	Single-action Mechanical	Single-action Double-action	Single-action Double-action	Single-action	Single-action	Single-action Double-action	Single-action Double-action	Single-action Double-action	Single-action
	Long service life and high accuracy	Small size and long stroke	Small size and high accuracy	Basic	From short torso and ultracompact	Crash safety and supply detection	Long stroke	Can be attached to the side	Low-pressure capable	Ultracompact
Stroke (mm)	3~12	4~6	8~12	4~6	4~6	4~6	6~16	8~10	4~6	4



Correct and firm gripping.  
The small, light and long lasting machines with safe and unique parallel air chucks decrease inertia.  
V-type opening and closing chucks are also available.

## TRANSPORTING

### PPUs that transport correctly and conveniently Cam-driven / pulse control motor-driven type

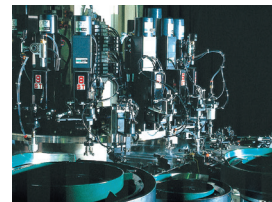
#### PPU Pick & Place Unit



	<b>Undercarriage (Pulse-Control Motor Type): Small, Medium, and High-Payload standard models, and a Front-Head model</b>	<b>Front-Head Stroke Extension</b>	<b>Center carrier (Cam-driven type)</b>	<b>Side carrier (Cam-driven type)</b>	<b>Side Head (Cam-driven type)</b>	<b>Flexible</b>
	Front-to-Back: 30, 40, 50, 60, 70, 80, 90, 100, 110, 120, 130mm – 31 Models	200, 220, 240, 260mm	Front-to-Back: 80, 100, 160, 200mm – Center-Arm Type, 6 Models	Front-to-Back: 80, 100, 160mm – Side-Arm Type, 20 Models	Front-to-Back: 80, 100mm – Side-Head Type, 3 Models	Front-to-Back: 100 mm (Max). Top-to-Bottom: 50 mm (Max)
	A wide range of transport options is available for everything from fine to small parts.		Achieving a compact design by reducing unit pitch		Compact design achieved through effective use of the arm's lower section	Armless design with a compact operating unit.
Cycle time (sec)	0.2~		0.8~		0.8~	0.8~



■ **Pulse-Control Motor Type PPU**  
Long-life, compact, high-precision PPU that transports fast and accurate motion.  
Available in a wide range of sizes to suit your application.



■ **Cam driven Type PPU**  
Mechanical PPU pursuing high precision and long life. Smooth, controlled motion achieved through a travel displacement curve. Available in 30 models with numerous options, enabling accurate and convenient transport.

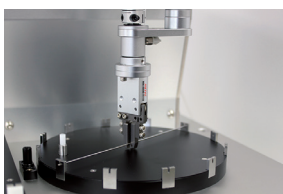
## PICKUP

### Ultra-high-speed, gentle pickup of even tiny workpieces

#### PIU Pickup Unit



	<b>External Input</b>	<b>Direct Motor</b>	<b>Motor Attached Separately</b>	<b>Auxiliary Guide</b>	<b>θ-Axis</b>	<b>θ-Axis (With Motor)</b>	<b>Swivel Head</b>	<b>Swivel Arm · Swivel Head</b>
	Main Body: 28, 42, 50 mm square · Air Port Type · Ball Bushing Type · Ball Spline Type							
	Stroke: 4, 8, 12, 16, 20, 30, 50mm – Wide Range of Operating Specifications							



This unit is ideal for vertical axes, combining years of expertise in advanced cam mechanisms with proven air equipment technology.

The main part of automation technology for assembling, is the process of moving the individual parts to the certain position then assembling. This can be divided into the following 4 elements 1 Correct positioning. 2 Correct gripping. 3 Correct transporting 4 Correct assembling. With the above 4 elements of machinery process, we have been developing and expanding out our system and its design is modular for automation assembling system. We have confidence that our technology and know-how can provide the best support and latest FA system technology for your automation program. Please refer our guidebook, brochure, and also our web site.



## ESCAPING

### Escaper that controls flow with a single action

**ESC**  
Escapment



Escapment

Stroke: 5 · 7 · 9 · 14 · 18mm

Stable separation and a wide variety

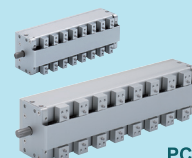


Continuous work flow can be separated easily.  
"Correct separation" that operates two fingers with one rotary actuator becomes the base of credibility for the entire system.

## CHANGING

### Pitch Changer with Freely Adjustable Pitch

**PCU PCS**  
Pitch Changer



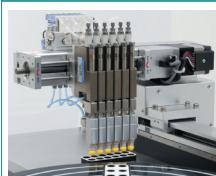
PCU

PCS

Lightweight & Compact

Full-Cover & High Rigidity

Slider Count: 2, 3, 4, 5, 6, 7, 8, 9



Ideal for transporting multiple workpieces!  
This general-purpose unit uses cam technology to enable freely adjustable pitch via the input shaft.

## POSITIONING

### Ultra-Compact, High-Speed X/Y Position Correction Stage

**CPS**  
Cam Positioning Stage



□60

□80

□84

□124

□60

X-Y, Y

Y-θ

Stroke : 2~5mm

Stroke : 2mm+θ

Feed Time : 0.1sec~



Cam-driven stage for position correction during transport.  
The drive unit does not protrude in the X and Y directions, enabling a compact, space-saving design.

## TURNING OVER

### Turnover best suited for high-speed turnover

**TOU**  
Turn Over Unit



One-drive type

One-drive type

Slider stroke : 8 · 16mm

Slider stroke : 32 · 48mm

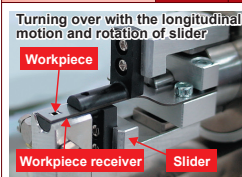
High-speed turnover with one drive

Turn over with high versatility

Cycle time(sec)

0.1~

0.3~



Turning over with the longitudinal motion and rotation of slider  
Workpiece  
Workpiece receiver  
Slider

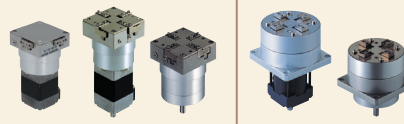


Instant turnover simpler and faster than ever.

## POSITIONING

### High-speed alignment for correct positioning

**ALU**  
4 Finger Alignment Unit



Small-sized rigid · buffer

Rigid · buffer

Main body: 30 x 30 mm

Main body: 50 x 50 mm

Stroke: from 3 mm

Stroke: from 6 mm

Compact and space-saving

Long stroke and Compact

Cycle time (sec)

0.1~

0.2~



Stepping and cam-driven high-speed and high-accuracy unit that positions with hooks from four directions outside the workpiece.  
The unit was made compact by putting functions together in a small body.

## DIVIDING

### Compact indexes

**INDEX**  
Turning Index



Number of indexes: 4 / 6

Indexing Time: 0.5 sec ~



A simple machine for which we focused on usability factors such as reduced size, high efficiency and high stiffness locking, and easy table direct attachment.

## PUSHING

### Cam-Driven Pusher

**POS**  
OSUZOH



Stroke : 20, 30mm

Clamping Load ~2000N, ~3000N



Turning the handle (motor) controls speed and force via the built-in cam, enabling high-speed, repetitive, and stable press-fitting and bending operations.



# FA equipment that realize stable production is here.

Access our informative website right away!

You can access our website from the address below as well.

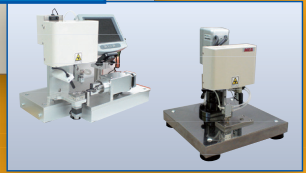
<https://www.meg.co.jp/en/>



**Access  
Now!!**

Visiting demonstration of each model

To request:



Product image

Product introduction

Model selection

PDF catalogue

CAD Data

Catalogue request

Selection support

Inquiry



MEG general catalogue, latest edition

**Providing with free of charge!**

To request:



**MACHINE ENGINEERING CO., LTD.**

Minami Minowamura 2380-480, Kamiina-gun, Nagano-ken 399-4583, Japan  
Phone: 0265-76-0001 (Operator) Facsimile: 0265-76-9601 e-mail: [info@meg.co.jp](mailto:info@meg.co.jp)  
<https://www.meg.co.jp/en/>

