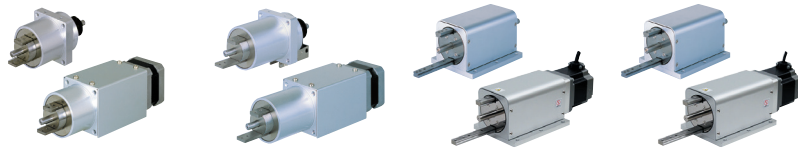


Product Line-up

Product introduction



Name	One-drive type	One-drive type	One-drive type	One-drive type
Model No.	X6410	X6412	X6414/X6414DM	X6416/X6416DM
Stroke	8mm	16mm	32mm	48mm
Cycle time	0.1sec~	0.2sec~	0.3sec~	0.4sec~

MEG turnover unit, which was developed based on the longstanding cam technology, achieves accurate double-sided turnover.

Please utilize the unit for your company’s FA planning and building.

Tou

Parts turner

Turnover Unit



MACHINE ENGINEERING CORPORATION

2380-480 Minamiminowa-mura, Kamiina-gun, Nagano 399-4583, Japan

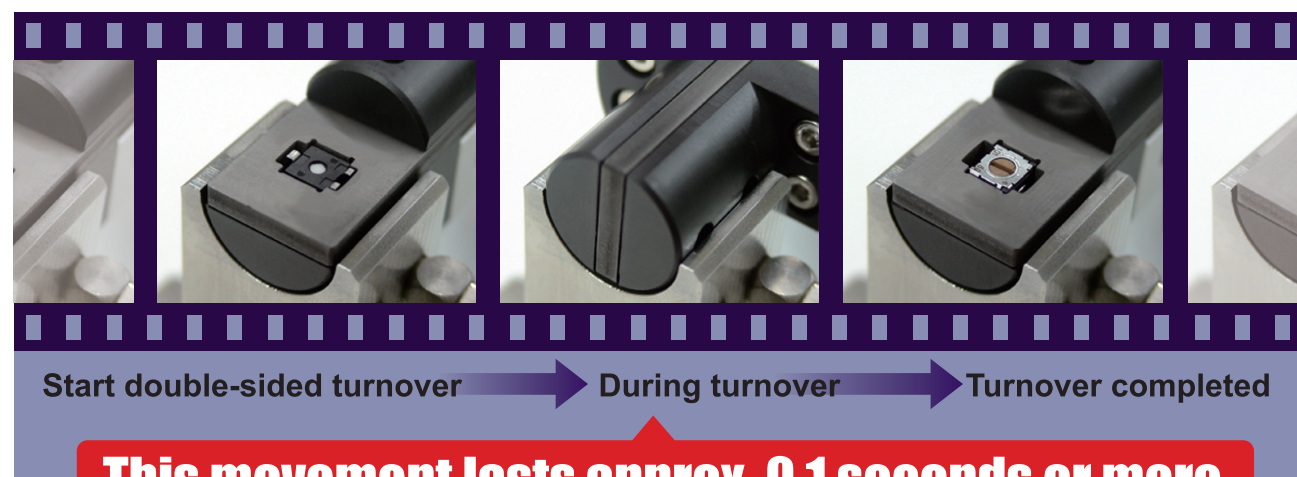
Tel: +81-265-76-0001 Fax: +81-265-76-9601

<https://www.meg.co.jp/en/>

E-mail : d-sales@meg.co.jp

Fine parts TURNOVER

At the scene, without scratching



Although double-sided turnover of parts seems to be easy at first glance, it is complicated considering the air actuator structure, no stability even with low-speed, and requires a large space. MEG turnover unit is a unique method, which enables accurate turnover with high-speed. This unit can be used for various purposes from manufacturing, inspection to packing.

Stable turnover even with high-speed

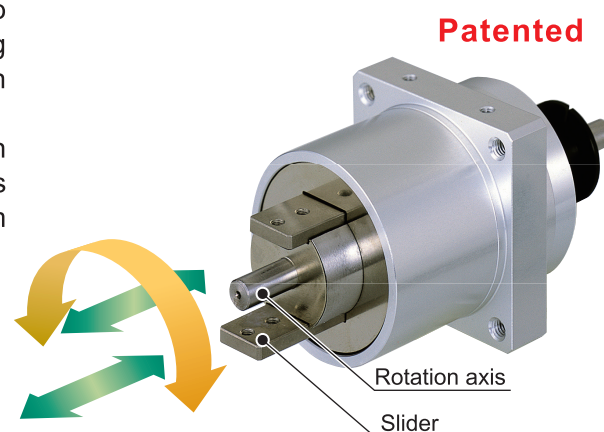
Excellent responsiveness based on cam mechanism with high accuracy of position repeat. Achievable by using a stepping drive that enables frequent start and stop.

Easy control

It enables a double-sided turnover only by rotating 180 degrees by means of a one step motor. Control is simple and it is a user-friendly unit.

Long service life

Slider is a tracked type linear guide, light and there is no forced power applied. Cam mechanism is a long time-proven mechanism and it is a unit with a long service life.

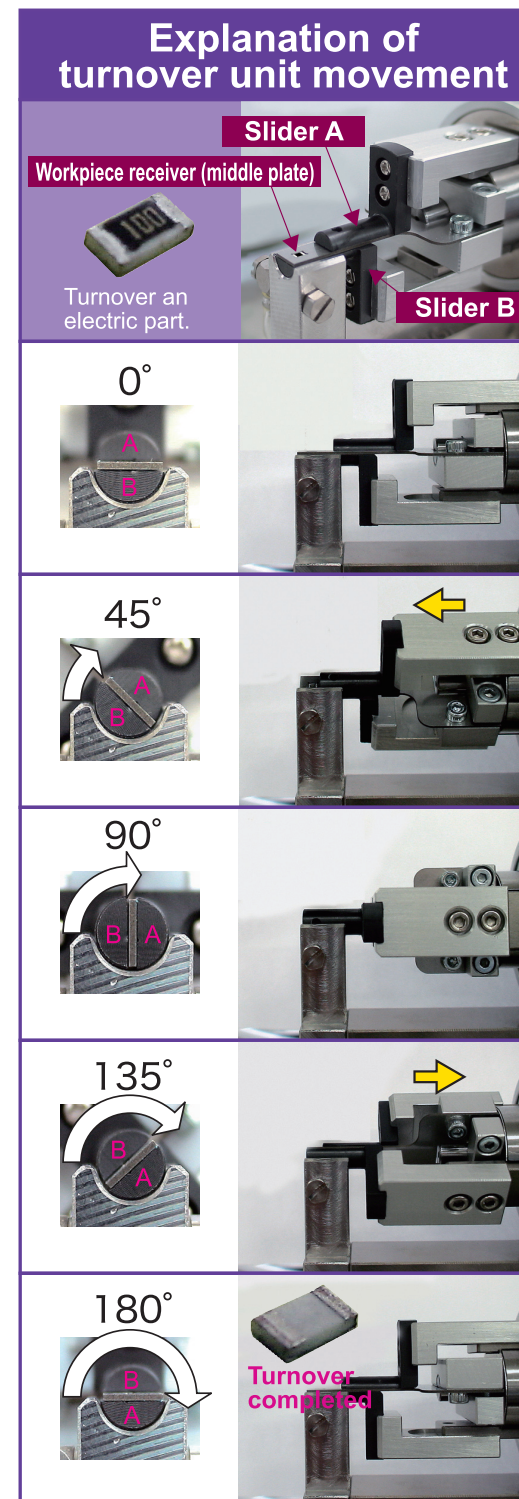


Space-saving turnover

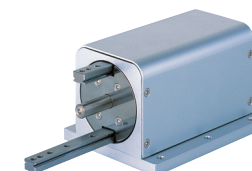
Although a traditional turnover requires large space, this method of turnover uses 1 point (feed and ejection positions are the same), therefore, it is space-saving.

Achieving reasonable unit

Compared to the traditional turnover that requires complicated process, turnover is possible with only this unit alone, therefore, it is reasonable.



Selectable depending on the usage

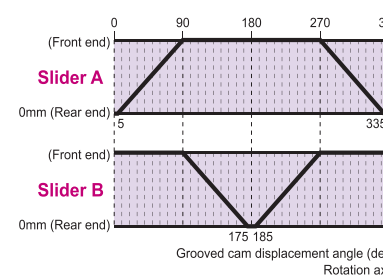
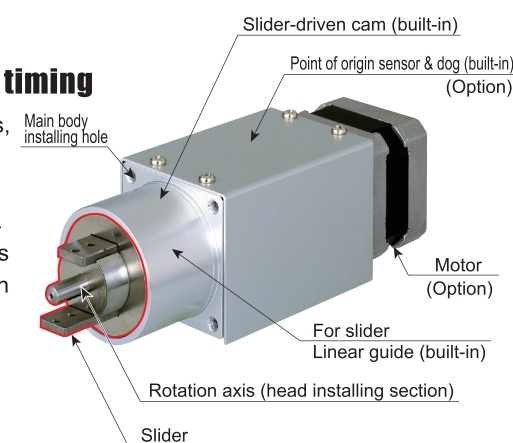


Abundant unit group

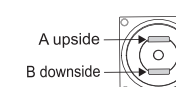
	Slider stroke (mm)			
	8	16	32	48
With motor. with of origin sensor	●	●	●	●
With motor. without of origin sensor	●	●	●	●
Without motor. with of origin sensor	●	●	●	●
Without motor. without of origin sensor	●	●	●	●

Slider movement timing

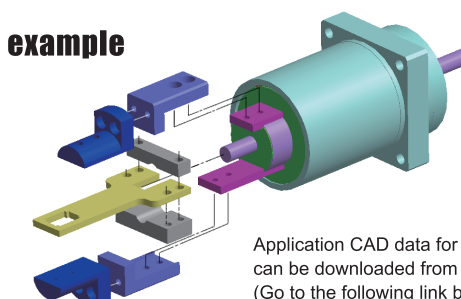
When the motor rotates, the rotation axis and slider (red section) synchronize and rotate. The internal cam moves the slider back and forth during rotation.



- * For the unit with a motor, Oriental Motor manufactured stepping motor is equipped.
- * Option parts (sensor and motor) installed to the rear section is equipped in the above picture.
- * The position at 0° is indicated in the figure below.

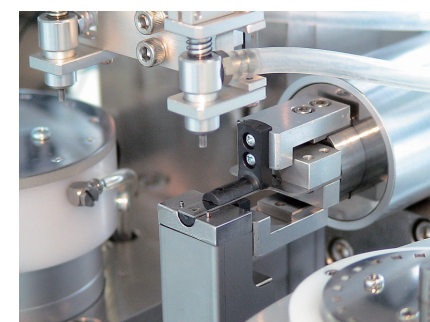


Application example

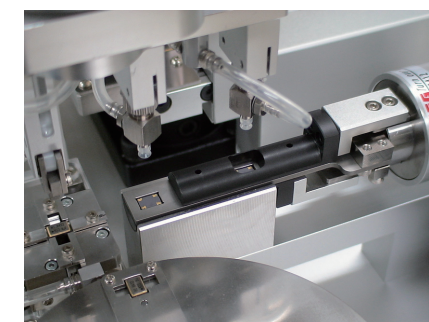


Application CAD data for demo machine can be downloaded from the website (Go to the following link below).

Usage example



Double-sided turnover in the middle of the process



Multiple workpieces can be processed at the same time



For mobile phone size workpiece as well

Turnover images and CAD data can be downloaded from the website: <https://www.meg.co.jp/en/>